



TEC-IT

TFORMer QuickPrint

Instant Form & Label Printing

Version 6.0

Documentation

27 April 2009

TEC-IT Datenverarbeitung GmbH
Wagnerstrasse 6
A-4400 Steyr, Austria

t ++43 (0)7252 72720
f ++43 (0)7252 72720 77
office@tec-it.com
www.tec-it.com

WWW.TEC-IT.COM

1 Content

1	Content	2
1.1	Table of Figures	2
2	Disclaimer	3
3	Introduction	4
3.1	What is TFORMer QuickPrint?	4
3.2	How to run TFORMer QuickPrint?	4
3.3	System Requirements	4
3.4	About this Document	4
4	General	5
4.1	User Interface	5
4.2	Working with TFORMer QuickPrint	5
4.3	Configuration Files	5
4.3.1	Using Customer Specific Data Files	6
4.3.2	Configuration management	6
4.4	Configuration Mode / Print Mode	6
5	Configuration	7
5.1	Common Settings	7
5.2	Select Form Layout	7
5.3	Output Configuration	8
6	Input Area	9
6.1	General	9
7	Print Form	10
7.1	General	10
8	Serial Numbers	11
8.1	General	11
8.2	Printing	11
8.2.1	Changed Serial Numbers	12
8.2.2	Simultaneous Printing	12
9	Contact and Support Information	13
9.1	Free Support	13
9.2	How to unlock the Demo Version	13
9.3	Company Contact Information	13

1.1 Table of Figures

Figure 1:	User Interface	5
Figure 2:	Common Settings	7
Figure 3:	Form Layout Selection	7
Figure 4:	Output Configuration	8
Figure 5:	Input Area – List	9
Figure 6:	Input Area – Table	9
Figure 7:	Serial number file (Example)	11
Figure 8:	Print dialog – changed serial numbers	12
Figure 9:	Print dialog– simultaneous printing	12

2 Disclaimer

The actual version of this product (document) is available as is. TEC-IT declines all warranties which go beyond applicable rights. The licensee (or reader) bears all risks that might take place during the use of the system (the documentation). TEC-IT and its contractual partners cannot be penalized for direct and indirect damages or losses (this includes non-restrictive, damages through loss of revenues, constriction in the exercise of business, loss of business information or any kind of commercial loss), which is caused by use or inability to use the product (documentation), although the possibility of such damage was pointed out by TEC-IT.



We reserve all rights to this document and the information contained therein. Reproduction, use or disclosure to third parties without express authority is strictly forbidden.



Für dieses Dokument und den darin dargestellten Gegenstand behalten wir uns alle Rechte vor. Vervielfältigung, Bekanntgabe an Dritte oder Verwendung außerhalb des vereinbarten Zweckes sind nicht gestattet.

© 1998-2009
TEC-IT Datenverarbeitung GmbH
Wagnerstr. 6

A-4400 Austria
t.: +43 (0)7252 72720
f.: +43 (0)7252 72720 77
<http://www.tec-it.com>

3 Introduction

3.1 What is TFORMer QuickPrint?

TFORMer QuickPrint is a tool used for fast printing of reports and forms. You can load existing layouts, fill them with data and print them on one of the supported output devices or export them to one of the supported file formats.

In addition **TFORMer QuickPrint** offers the possibility to provide serial numbers and assign them to datafields. **TFORMer QuickPrint** ensures the unique allocation of serial numbers within the whole network (works with multiple users as well!).

TFORMer QuickPrint is shipped together with the form layout designer **TFORMer Designer**.

3.2 How to run TFORMer QuickPrint?

Run **TFORMer QuickPrint** from:

Start ► All Programs ► TEC-IT TFORMer 6.0 ► TFORMer QuickPrint

3.3 System Requirements

- ▶ Windows 2000 or higher.
- ▶ **TFORMer QuickPrint** requires the .NET Runtime 2.0!

3.4 About this Document

This document covers the following issues:

- Description of the user interface and how to work with this program – see Chapter 4.
- Selection of form layout and output type – see Chapter 5.
- Input of the printing data – see Chapter 6.
- Start print job – see Chapter 7.

4 General

4.1 User Interface

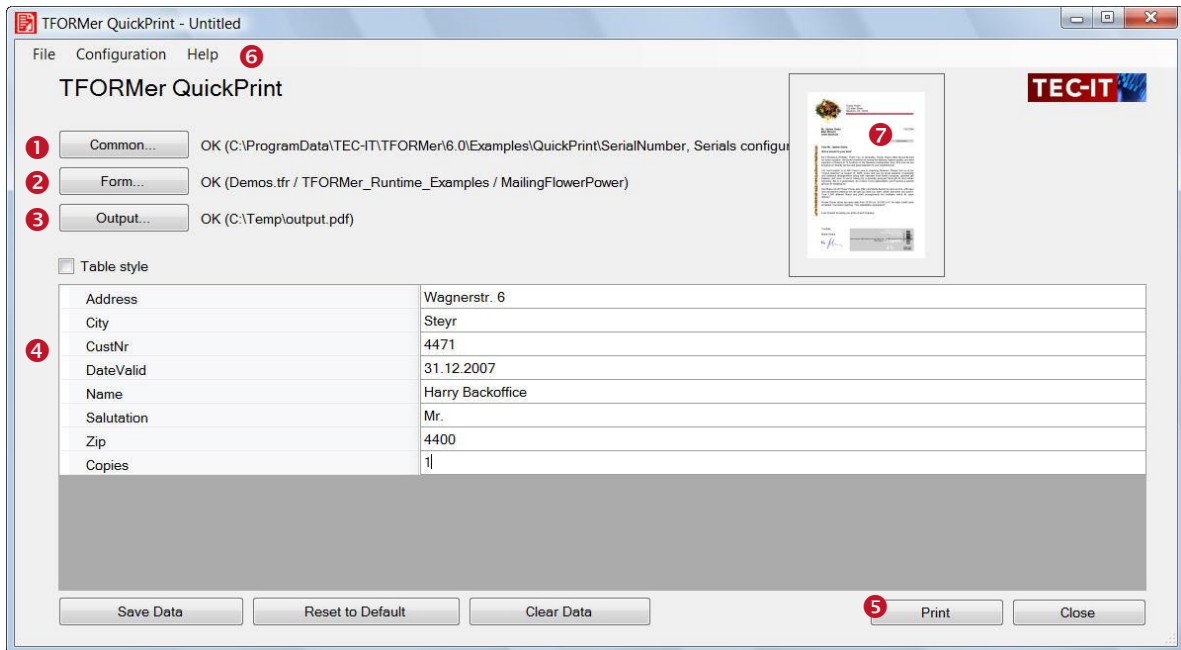


Figure 1: User Interface

The user interface contains the following sections:

- 1 Common Settings. See Chapter 5.1.
- 2 Form layout selection. See Chapter 5.2.
- 3 Output configuration. See Chapter 5.3.
- 4 Input area. See Chapter 6.
- 5 Print. See Chapter 7.
- 6 Menu.
- 7 Preview of the form layout.

4.2 Working with TFORMer QuickPrint

First use the buttons 1 to 3 for common adjustments, for the selection of the desired form layout and for the selection of the output type (file or printer) (see Chapter 5). These settings are also available through the *Configuration* menu.

Next enter the print data in the input area 4 (see Chapter 6).

Finally start printing with button 5 (see Chapter 7).

4.3 Configuration Files

TFORMer QuickPrint supports loading and saving of configurations. The configuration files use the extension *.qpi* and are saved in XML format. They contain the settings from 1 to 3.

This gives the user the possibility to easily change the form layout, the serial number file and the output medium with a mouse-click.

- ▶ When starting **TFORMer QuickPrint** the most recently saved settings are loaded automatically. You can continue with the data input and with the printing of the last form layout immediately.
- ▶ To load a specific configuration file use the menu *File ▶ Open...*, double-click the *.qpi* file or pass the *.qpi* file as a command line parameter to **TFORMer QuickPrint**.

4.3.1 Using Customer Specific Data Files

With **TFORMer QuickPrint** you can easily print forms with customer specific data. All you have to do, is create a configuration file for each customer. In this configuration file you specify the required data-file (see section 5.2).

4.3.2 Configuration management

You can manage the configurations via the menu entry *File*.

New	Creates a new configuration. All settings are reset to default.
Open...	Loads an existing configuration. The last used printing data is displayed in the input area.
Save / Save as...	Saves the current configuration. The filename can be assigned freely.

4.4 Configuration Mode / Print Mode

You can always switch between the configuration mode and the print mode via the menu.

Configuration ▶ Printmode

While working in the configuration mode, all settings can be changed. The configuration mode is the default mode.

While working in the print mode, most of the settings are locked. The user can only change the print data and start a print-job. The settings are locked.

The currently used mode is stored in the configuration file. – In order to prevent the user from changing the configuration, the configuration file should be marked as read-only.

5 Configuration

5.1 Common Settings

Via the *Common* button the general program settings are adjusted:

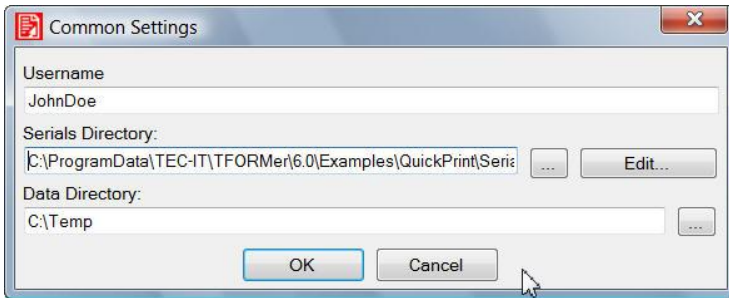


Figure 2: Common Settings

Username	Arbitrary username (used for serial numbers only). During every print job, the serial number file is locked for other users. The specified username serves as information which user is currently printing.
Serials Directory	See Chapter 8.
Data Directory	Storage of the last printed data. ¹ In this directory, the last printed data is stored. This data is loaded together with the corresponding form layout and displayed in the input area. This directory is only used if no specific data file was adjusted (see 5.2).

5.2 Select Form Layout

Via the *Form* button the form layout is selected:

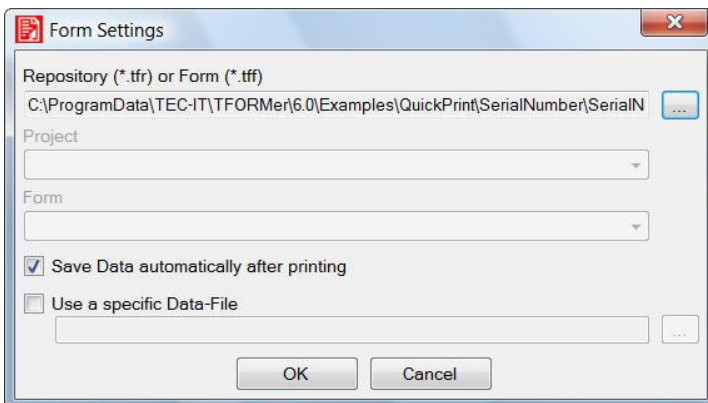


Figure 3: Form Layout Selection

Repository	Select a repository (*.tfr) or stand-alone form layout (*.tff).
Project	Select a project. Select the project inside the repository. Only available if a repository was selected.
Form	Select a form layout.

¹ TFORMer QuickPrint automatically creates a subfolder for every project. The last printed data is stored under the form name (as an XML file).

	Select the form layout inside the project. Only available if a repository was selected.
Save Data automatically after printing	Use this checkbox to save the used data automatically after the form was been printed.
Use a specific Data-File	You can specify an arbitrary data file in which the used print data is stored. If no file is specified, the default data file of the form is used.

5.3 Output Configuration

Via the *Output* button the output format is selected:

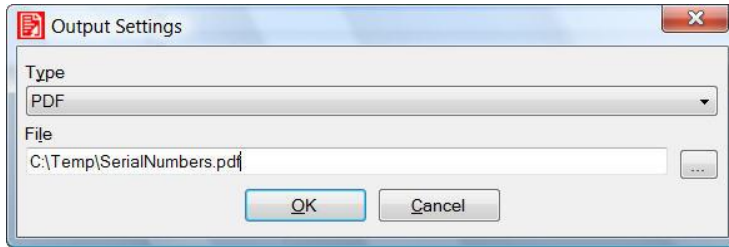


Figure 4: Output Configuration

Type	<p>Select the output format.</p> <p>You can choose one of the following output types:</p> <ul style="list-style-type: none"> ▪ PDF – output to a PDF file. ▪ HTML – output to a HTML file. ▪ Text – output to a Text file. ▪ PostScript – output to a PostScript file. ▪ Printer – output to a printer. ▪ Image formats – output to an image file. ▪ Zebra – output in ZPL-II into a file or to a printer.
File	<p>Output file or printer.</p> <p>In dependency of the selected output type, select the output file or the printer.</p>

6 Input Area

6.1 General

After a form layout was selected (see Chapter 5.2), the input area will be enabled.

You can edit the printing data in two different ways: In a list (see Figure 5) or in a table (see Figure 6). You can switch between those two views with checkbox ❶.

❶ Table style	
ArticleName	Tisch
ArticleNo	1000 ❷
ArticlePrice	150
Count of Serials	1
Copies	1

Figure 5: Input Area – List

❶ Table style					
	ArticleName	ArticleNo	ArticlePrice	Count of Serials	Copies
	Tisch	1000 ❷	150	1	1
✎	Stuhl	1001	50	1	4
	Vase	1002	12	1	1
* ❸		1003		1	1

Figure 6: Input Area – Table

In this example, the datafield “ArticleNo“ will be automatically filled with a serial number (can be recognized by the gray background ❷). All other data has to be entered manually.

- ▶ Only in the table view multiple records can be created and edited simultaneously. To insert a new record edit the record in the last row ❸ and press the *return key*. A new row will be added.

7 Print Form

7.1 General

To start printing (or the output to a file) press the button *Print* (see Figure 1, ⑤). The output is created according to the specified output settings (see Chapter 5.3).

- File: After its successful creation the file is automatically opened with the associated Windows® application (e.g. PDF with Acrobat Reader).
- Printer: No further confirmation.



8 Serial Numbers

8.1 General

To automatically fill a datafield with serial numbers, you have to specify the path to a serial number file in the *Common Settings* dialog (see Chapter 5.1). With this file **TFORMer QuickPrint** automatically calculates consecutive numbers for one or more datafields.

The filled datafields are shaded in gray in the input area (see Figure 5 und Figure 6). Those datafields cannot be edited by the user.

The serial number file has to be named „*QuickPrint.XML*“. This file can be saved in an arbitrary directory.

- ▶ If no serial number file was specified, you cannot use the automatic serial number generation.
- ▶ You can specify several directories for different serial number configurations.

The file *QuickPrint.XML* saves the actual values for one or more serial numbers (datafields). In addition the step size for the increment of the numbers can be specified. You can specify an arbitrary number of datafields.

Example:

```
<?xml version="1.0" standalone="yes"?>
<root>
  <SerialNumber current="1456" stepSize="1" />
</root>
```

Figure 7: Serial number file (Example)

In this example file the datafield named *SerialNumber* is treated as a serial number. The actual value of this datafield is set to 1456. If **TFORMer QuickPrint** prints a form using this datafield, the value of this datafield will be incremented by 1 (parameter *stepSize*).

8.2 Printing

When printing **TFORMer QuickPrint** uses the following procedure:

1. When loading a form layout **TFORMer QuickPrint** checks whether the form contains datafields marked as serial numbers. If so, these datafields are shaded in gray. They cannot be altered manually.
2. If the button *Print* is pressed **TFORMer QuickPrint** opens the serial number file and locks it for other users.
3. The current serial number values are read from the serial number file.
4. After the print-job is finished, the serial number file is updated and unlocked. Other users can now again print forms, which are using the same serial number file.

8.2.1 Changed Serial Numbers

If the serial number has changed while editing the printing data (another user has printed the same form in the meantime), you will get the following message:

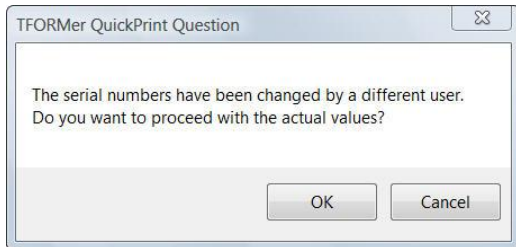


Figure 8: Print dialog – changed serial numbers

You can react on the changed counter state as follows:

- **OK:** The used serial numbers will be updated and printed.
- **Cancel:** The used serial numbers will be updated and the printing is aborted.

8.2.2 Simultaneous Printing

If you try to print a form containing serial numbers which is already being printed by another user, you will get the following message:

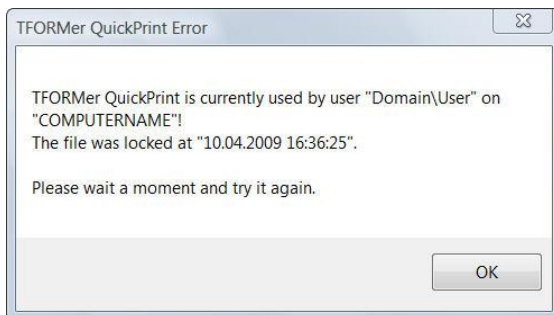


Figure 9: Print dialog– simultaneous printing

Solution: Start the print job a few moments later again.

- ▶ If you cannot print for a considerable time, check whether the print job which causes the lock, is still active. If not, delete the lock file „*QuickPrint.lck*“. You can find this file in the same directory as the „*QuickPrint.XML*“. See also section 5.1.

9 Contact and Support Information

9.1 Free Support

If you have questions, need help or simply want to tell us about your application, contact:

Email: support@tec-it.com

Web: <http://www.tec-it.com/support/>

Don't hesitate to contact us - let us hear your feedback! If the product does not fulfill your requirements, please tell us why. We are highly interested in meeting the requirements of our customers.

9.2 How to unlock the Demo Version

You can unlock the demo version with a license key. License keys can be obtained from TEC-IT by Email, online order form or FAX.

Email: sales@tec-it.com

Online: <http://www.tec-it.com/order/>

Fax: +43 / (0)7252 / 72 72 0 – 77

9.3 Company Contact Information

TEC-IT Datenverarbeitung GmbH

Address: Wagnerstrasse 6
AT-4400 Steyr
Austria/Europe

Phone: +43 / (0)7252 / 72 72 0

Fax: +43 / (0)7252 / 72 72 0 – 77

Email: support@tec-it.com

Web: <http://www.tec-it.com>

AIX is a registered trademark of IBM Corporation.

HTML, DHTML, XML, XHTML are trademarks or registered trademarks of W3C, World Wide Web Consortium, Laboratory for Computer Science NE43-358, Massachusetts Institute of Technology, 545 Technology Square, Cambridge, MA 02139.

JAVA® is a registered trademark of Sun Microsystems, Inc., 901 San Antonio Road, Palo Alto, CA 94303 USA.

JAVASCRIPT® is a registered trademark of Sun Microsystems, Inc., used under license for technology invented and implemented by Netscape.

Microsoft®, Windows®, Microsoft Word®, Microsoft Excel® are registered trademarks of Microsoft Corporation.

Navision is a registered trademark of Microsoft Business Solutions ApS in the United States and/or other countries.

Oracle® is a registered trademark of Oracle Corporation.

PCL® is a registered trademark of the Hewlett-Packard Company.

PostScript is a registered trademark of Adobe Systems Inc.

SAP, SAP Logo, R/2, R/3, ABAP, SAPscript are trademarks or registered trademarks of SAP AG in Germany (and in several other countries).

All other products mentioned are trademarks or registered trademarks of their respective companies. If any trademark on our web site or in this document is not marked as trademark (or registered trademark), we ask you to send us a short message (<mailto:office@tec-it.com>)